

# Commissioning Growing from within Public Health

Susie Crome

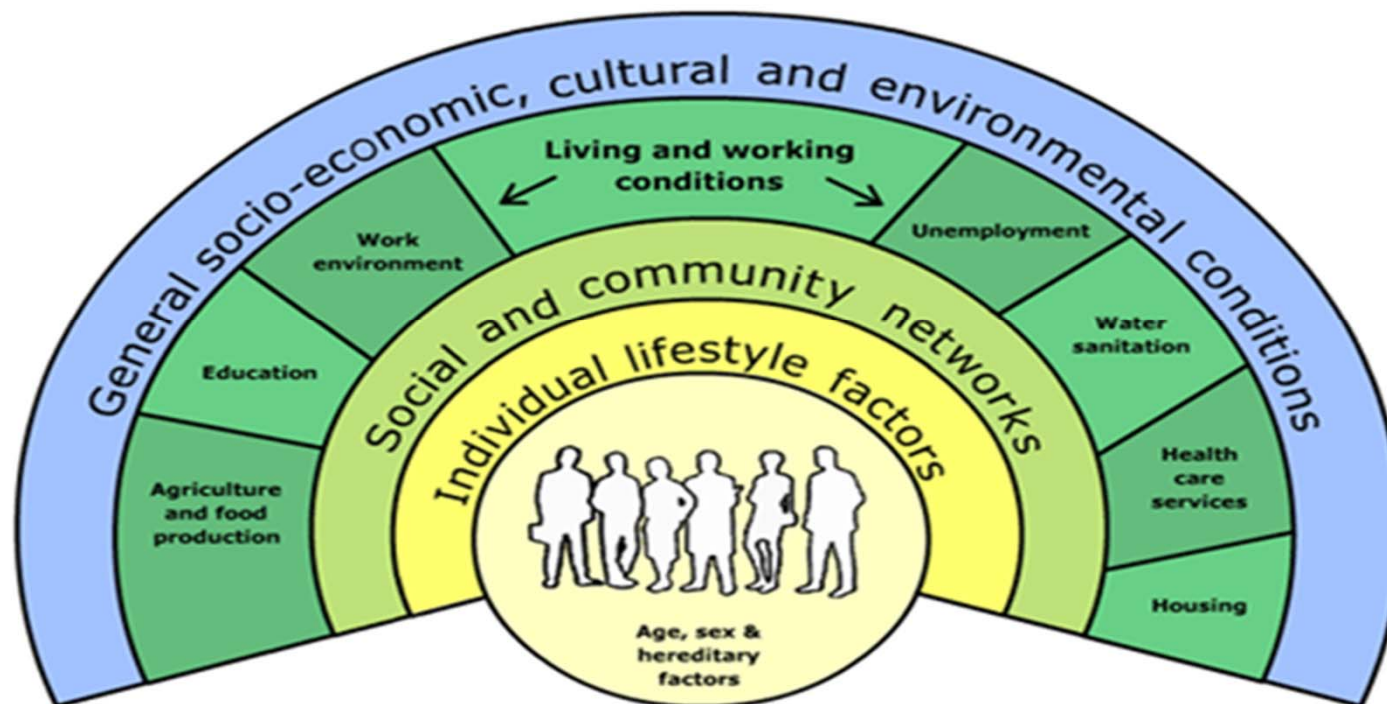
Public Health Locality Manager

April 2014

# What is public health?

‘Science and art of improving the population’s health through the organised efforts of society’

The Main Determinants of Health



# Local authorities developed from the need for public health intervention....

*With the 'the spectre of cholera stalking the slums of the great towns' the most important measures to improve public health were 'drainage, removal of all refuse from habitations, streets and roads and the improvements of the supplies of water'*

The Sanitary Conditions of the Labouring Population of Great Britain' 1842, Edwin Chadwick



4/14/2014



3

# The vision of public health in local government

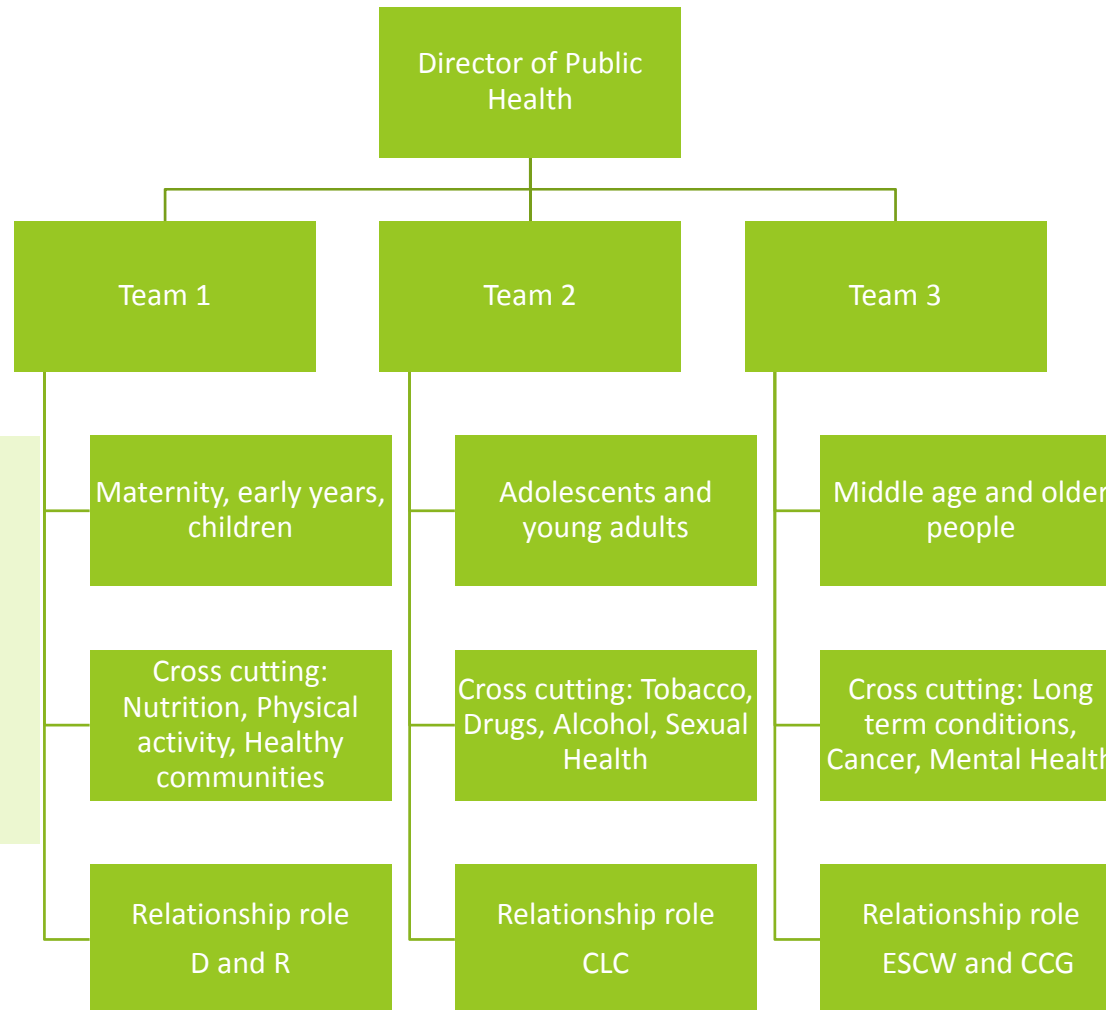
## ***Our vision for local government leadership of public health***

*Building on local government's long and proud history of public health leadership, our vision is for local authorities to use their new responsibilities and resources to put health and wellbeing at the heart of everything they do, thereby helping people to lead healthier lives, both mentally and physically*

*DH Guidance on Public Health in Local Government (Dec 2011 p3)*

# PH Structure LBTH

- Expert advisor role on Health
- Cross cutting: JSNA, Healthy Lives Strategy
- Commissioning: overall coordination
- Assurance of PH system
- Relationship role: Members, all Directorates, SPP
- Training role: supervisions of SpRs and development of PH practitioner Programme



Public Health  
42 staff  
ESCW directorate

Locations:  
4<sup>th</sup> Floor Mulberry  
Albert Jacob House  
Community Hubs  
CCG

Each team works as relevant around domains of:

- Wider determinants
- Health improvement
- Health protection
- Health and social care

# Commissioning Growing

- Four Main Stages
  - Making the case
  - Developing a specification
  - Tender process
  - Review and evaluation

# Public Health Outcomes Framework

## OUTCOMES

Vision: To improve and protect the nation's health and wellbeing, and improve the health of the poorest fastest

**Outcome 1:** Increased healthy life expectancy  
*Taking account of the health quality as well as the length of life*  
(Note: This measure uses a self-reported health assessment, applied to life expectancy.)

**Outcome 2:** Reduced differences in life expectancy and healthy life expectancy between communities  
*Through greater improvements in more disadvantaged communities*

(Note: These two measures would work as a package covering both morbidity and mortality, addressing within-area differences and between area differences)

## DOMAINS

### DOMAIN 1:

Improving the wider determinants of health

Objective: Improvements against wider factors that affect health and wellbeing, and health inequalities

Indicators }  
Indicators }  
Indicators } Across the life course

### DOMAIN 2:

Health improvement

Objective: People are helped to live healthy lifestyles, make healthy choices and reduce health inequalities

Indicators }  
Indicators }  
Indicators } Across the life course

### DOMAIN 3:

Health protection

Objective: The population's health is protected from major incidents and other threats, while reducing health inequalities

Indicators }  
Indicators }  
Indicators } Across the life course

### DOMAIN 4:

Healthcare public health and preventing premature mortality

Objective: Reduced numbers of people living with preventable ill health and people dying prematurely, while reducing the gap between communities

Indicators }  
Indicators }  
Indicators } Across the life course

# Developing a specification

- Budget
- Be clear on what is expected
- Differentiating between 'Outcomes' and 'Outputs'
- Timescale
- Evaluating delivery and impact



# Tender Process and Commissioning in Local Authority

- Challenges
  - Structures
  - Financial constraints
- Benefits
  - Link with other departments
  - Opens doors

# Review and Evaluation

- Monitoring
- Reporting
- Evaluating
- Learning
- Sharing