

# Planning Sustainable Cities and Community Food Growing

*Using planning policy to meet  
strategic objectives through  
community food growing.*

# National Planning Context

## What is a Healthy Community?

For active healthy lifestyles

- green open space and safe places for food growing.

Planning Practice Guidance for England  
2014



# Local Authority Planning Context

- **Contribution to Strategic Objectives**
- **Local Planning Policies**



# How Community Food Growing Contributes to Local Strategic Objectives

- Sustainability
- Green Infrastructure
- Health
- Economy
- Regeneration
- Design and Amenity





# Writing Planning Policies to Support Community Food Growing

## Local Planning Role

- Local Plan Making
- Neighbourhood and Area Planning
- Publishing Planning Guidance



# Writing Planning Policies to Support Community Food Growing

- Spatial Vision
- Strategic Policy
- Development Management Policy
- Guidance
- Implementation
- Monitoring



# Spatial Vision

## Education, Skills and Enterprise

“Opportunities to use the Borough's countryside and urban open space for local food production and as a source of low-carbon (biomass) fuel will be taken advantage of.”

Stockport Core Strategy (2011)



Apprenticeships & NVQs



# Strategic Policy

## Climate Change

“The Council will:

*require* development to incorporate measures that will contribute to on-site sustainable food production commensurate with the scale of development”

Kensington & Chelsea Core Strategy 2010



SuDS in Schools



# Development Management Policy

## Green Infrastructure

“All new residential development *should* be designed and located to facilitate opportunities for local food growing.”

Bristol Site Allocations &  
Development Management  
DPD 2014



New development, Swindon

# Publish Guidance

## Sustainability

- Ensure size of gardens allows for multiple uses, including for growing food.
- In urban developments provision of plazas, allotment areas, courtyards and green/brown roofs to help to reduce the urban heat island and provide a mosaic of habitats for wildlife.

Leicester City Climate Change SPD 2011



Roof Garden, Reading

# Implementation

## Regeneration

- Section 106 planning obligations will be sought to provide ....
  - local food production and growing

Lambeth Local Plan 2015



Meanwhile garden, Hastings



# Evidence

## Health & Wellbeing

- Belfast Healthy City - Growing Communities Strategy



Community Kitchen Garden,  
North Kensington



# Monitoring

## Green Infrastructure

The outcomes that we want	The indicators we will use to monitor the desired outcomes	The targets for the outcomes
Enhanced allotments, community gardens, and woodland	New growing spaces provided per year (including new allotment plots and growing areas provided in new development)	All residents to be within 15 minute walk time of good quality provision (Minimum site sizes: <u>0.4ha</u> or <u>0.025ha</u> per plot)
Increases in local food growing, tree planting and forestry		Total of <u>198.65ha</u> required over the plan period
Growing areas, edible planting and flexible landscaping designed into new developments to increase food production		

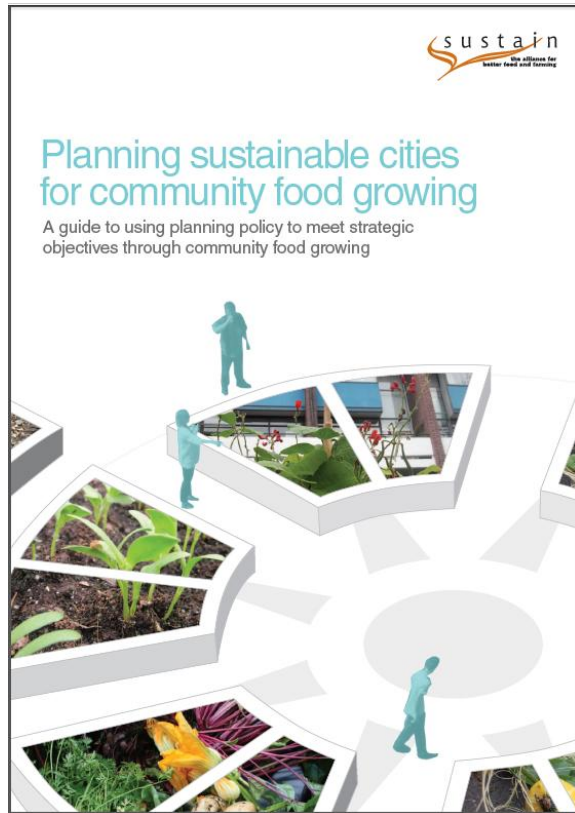
Croydon Council monitoring framework  
Productive Landscapes Policy

# Recommendations

- Protect
- Support
- Encourage
- Require



Holland Street Garden, Miles Platting, Manchester



# Planning Sustainable Cities and Community Food Growing - *A guide to using planning policy to meet strategic objectives through community food growing*

**[www.sustainweb.org](http://www.sustainweb.org)**