



**INCREDIBLE
EDIBLE**



SEEDS TO SOLUTIONS



A GRASSROOTS RESPONSE TO CLIMATE CHANGE



PAM WARHURST



INCREDIBLE

BEGINNINGS



INCREDIBLE

BEGINNINGS

Why bother?

- Huge weather swings
- Health problems through the roof
- Water wars on the horizon
- Increasingly divided societies

Where's the leadership?



SPINNING

THREE PLATES



**We galvanize our community
through growing and
celebrating local food**

**We bring learning to life,
from plot to playground**

**We support local
and we buy local**

Community

Learning

Business

CHANGING SPACES



BE THE CHANGE

MAKE THE CHANGE

A KINDER PROSPERITY



**Incredible
grass roots
innovators
& change
makers**

**CHANGE
THE
SYSTEM**



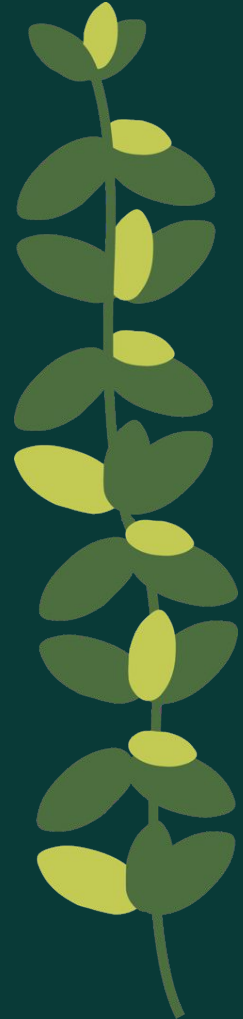
IF YOU EAT

YOU'RE IN

**Influence Anchor
Institutions:
Local Government,
NHS & Academia,
Housing...**



CHANGE THE RULES



Imagine if every neighbourhood was Incredible Edible.

Imagine if citizens were respected partners in adapting to climate change.

Imagine if we didn't rely on goodwill to grow local food on public land.



THE RIGHT TO GROW

An abundant future where communities are trusted to grow nutritious food together, on shared public land

**ENTRY POINT
FOR FUTURE
FOOD &
FARMING
CAREERS**



**INCREASED
SUPPORT
FOR LOCAL
SUPPLY
CHAINS**

**ENHANCED
UNDERSTANDING
BETWEEN
CITIZEN AND
STATE**

**COMMUNITY
FARMS
CLOSE TO
TOWNS**

**MORE
COMMUNITY
GROWING
PROJECTS &
ASSOCIATED
BENEFITS**



**MORE
WILDLIFE
FRIENDLY
URBAN
SPACES**

**GOOD,
AFFORDABLE
FOOD FOR
EVERYONE**

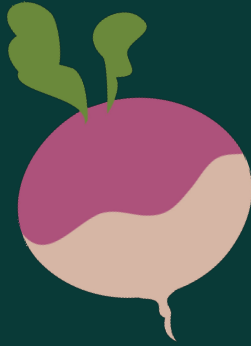


INSTITUTIONAL CHALLENGES TO COMMUNITY GROWING



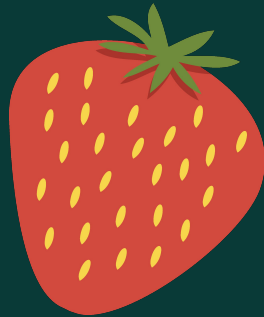
- **LIMITED LAND ACCESS**
- **FRAGMENTED COUNCIL POLICIES
& AMBIGUOUS RESPONSIBILITY**
- **LOW PRIORITISATION OF
COMMUNITY GROWING**
- **DISCONNECT OF COMMUNITY
GROWING FROM AUTHORITIES'
WIDER FOOD AND CLIMATE
POLICIES**

WHAT IS THE RIGHT TO GROW?



- **ACCESSIBLE LISTS/MAPS OF PUBLIC LAND**
- **REPLACING 'PERMISSION' WITH RIGHTS-BASED APPROACH**
- **UNCOMPLICATED, FREE LEASES FOR COMMUNITY GROUPS**
- **AUTHORITIES PRIORITISE COMMUNITY GROWING AND BUILD TRUST BETWEEN CITIZEN AND STATE**

WHY DO WE NEED A RIGHT TO GROW?



- **AUTHORITIES MUST RECOGNISE THE CONTRIBUTION COMMUNITY GROWING GIVES TO CLIMATE AND FOOD POLICIES**
- **REDUCING BUREAUCRACY PAVES THE WAY FOR MORE COMMUNITY GROWING**
- **IMPROVING ACCESS IS FUTURE PROOFING FOR MORE COMMUNITY GROWING**
- **LOCAL POLICIES FOR SOME CAN LEAD TO NATIONAL POLICIES FOR ALL**

THE RIGHT TO GROW

IS SUPPORTED BY:



Food, Farming & Countryside Commission



GROWING COMMUNITIES



The Worshipful Company of GARDENERS



tcpa



sustain



food wise
leeds



The David Cock Foundation



RIGHTS COMMUNITY ACTION



BRISTOL GOOD FOOD 2030



CENTRE for SUSTAINABLE HEALTHCARE
inspire • empower • transform

