



**MAYOR OF LONDON**

---

# London Local Nature Recovery Strategy

SEWN Together – a localised food growing gathering in North London

3rd October 2024



# WHAT IS THE LNRS?

---

## **New system of spatial biodiversity strategies developed to:**

- Support efforts to recover nature across England
- Support the delivery of Biodiversity Net Gain (BNG)
- Help deliver national environment targets

## **Will closely involve:**

- All 32 of the London Boroughs and City of London
- Natural England
- 6 neighbouring Counties



# LNRS

Statement of biodiversity priorities



Local habitat map



## Description of London will include:

- What nature do we already have.
- Where are the opportunities for the LNRS.

## Priorities and measures:

- What habitats/species are in particular risk in London over the next 10 years.
- The action/measures required to alleviate that risk.



## Areas of particular importance includes:

- Where nature is already protected in London.



## Areas that could become of particular importance:

- Pipeline of opportunity areas.
- Locations for priority action/measures, targeting at risk species/habitat.

# WHY IS IT NEEDED?

---

## Loss of Nature

- The average decline in species' abundance of 32% in England
- Nearly one in six species are threatened with extinction from Great Britain
- The UK is currently placed in the lowest 12% of global countries and territories for biodiversity intactness

## WHAT IT IS NOT?

---

### **It is not a site designation or site protection system**

- The LNRS does not afford protection to or designate new or existing sites.

### **It does not replace Sites of Importance for Nature Conservation**

- The LNRS does not replace the existing local designation system for Nature Conservation in London

# WHAT IT IS?

---

## Project Pipeline for Nature Recovery

- Using defined nature priorities and specific management measures; projects/opportunity areas will be identified and mapped

## Implementation for Nature Recovery

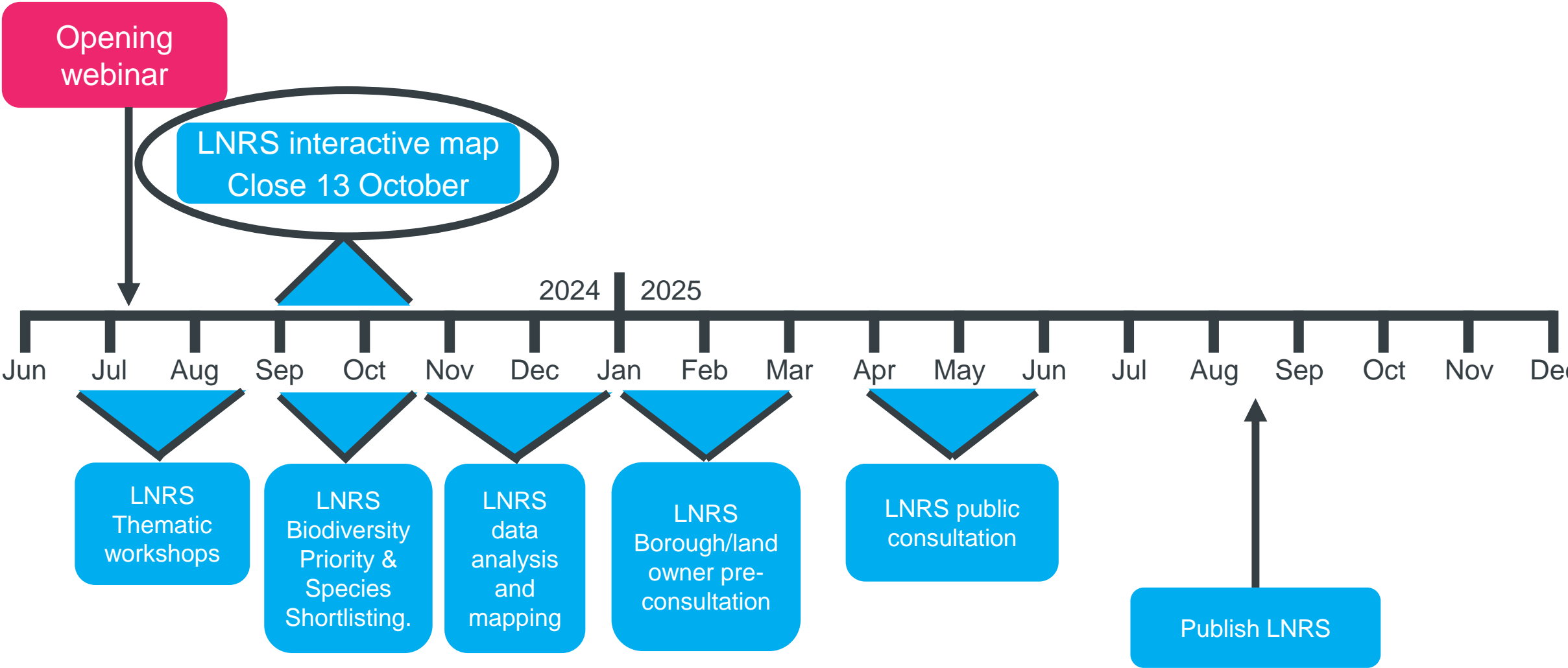
- Co-ordinated vision for nature recovery in London
- Increase cumulative impact of smaller projects
- **Evidence base for funding**

## WHAT THE LNRS NEEDS

---

- What are the habitat (and species) priorities for nature recovery in London?
- What measures (actions) are needed to deliver these priorities?
- Where (geographically) are these measures best focused?

# LNRS ENGAGEMENT TIMELINE





# LNRS PRIORITIES AND MEASURES

---

## Priority (What)



**Increase populations of skylark**



## Measure (How)



**Protection for ground nesting birds – fence breeding areas from disturbance.**



## Mapping (Where is it taking place)



**Draw polygon for species recovery area opportunity**

---

### Priority (What)



**Increase populations of skylark**



### Measure (How)



**Signage – Inform the public skylarks are nesting and to keep dogs on lead in this area.**



### Mapping (Where)



---

## Priority (What)



**Increase populations of skylark**

## Measure (How)



## Mapping (Where)



**Annual grassland and scrub management - maintain optimum condition for ground nesting birds**



## Priority (What)



**Increase habitat for  
pollinators**



## Measure (How)



**Pollinator friendly intervention  
(habitat boxes/planting/mini  
meadows)**

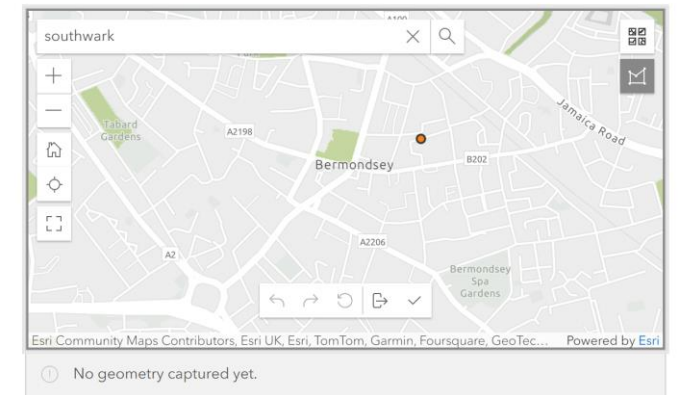


## Mapping (Where)

### Add your suggestions for the LNRS.\*

Please select the button in the top right-hand corner of the map below to draw the specific area associated with the habitat (and species) you would like considered in the LNRS. The Greater London boundary is shown in a dark line - this is the area included in the London LNRS. Feel free to add suggestions that cross the border between London and other areas, but we will not be able to consider suggestions that fall wholly outside the Greater London boundary. The coloured areas show areas that are already protected for nature (specific designations are set out in the legend below). You can upload any additional shapefiles containing exact boundaries at the end of this form.

Please note all areas (polygons) submitted, will be automatically added to the live LNRS interactive map.



**Draw where your community  
garden is on the map!**

---

## Priority (What)



**Increase habitat for  
pollinators**

## Measure (How)



**Grassland/Meadow**

## Mapping (Where)



**Draw where on your community  
garden!**



---

## Priority (What)



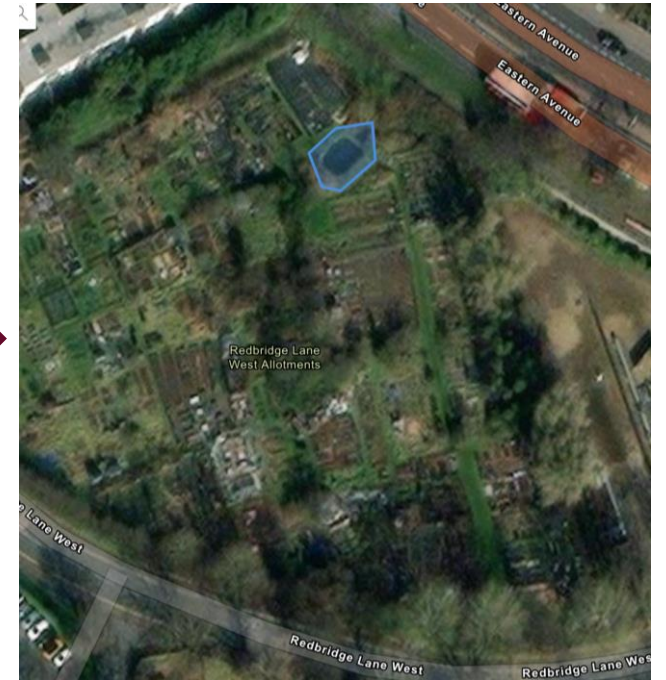
**Increase and enhance  
habitat for amphibians**

## Measure (How)



**Restore/create a Pond**

## Mapping (Where)



**Draw where on your allotment!**



---

## Priority (What)



**Increase and enhance  
habitat for small mammals**



## Measure (How)



**Scrub/Open Mosaic Habitat**



## Mapping (Where)



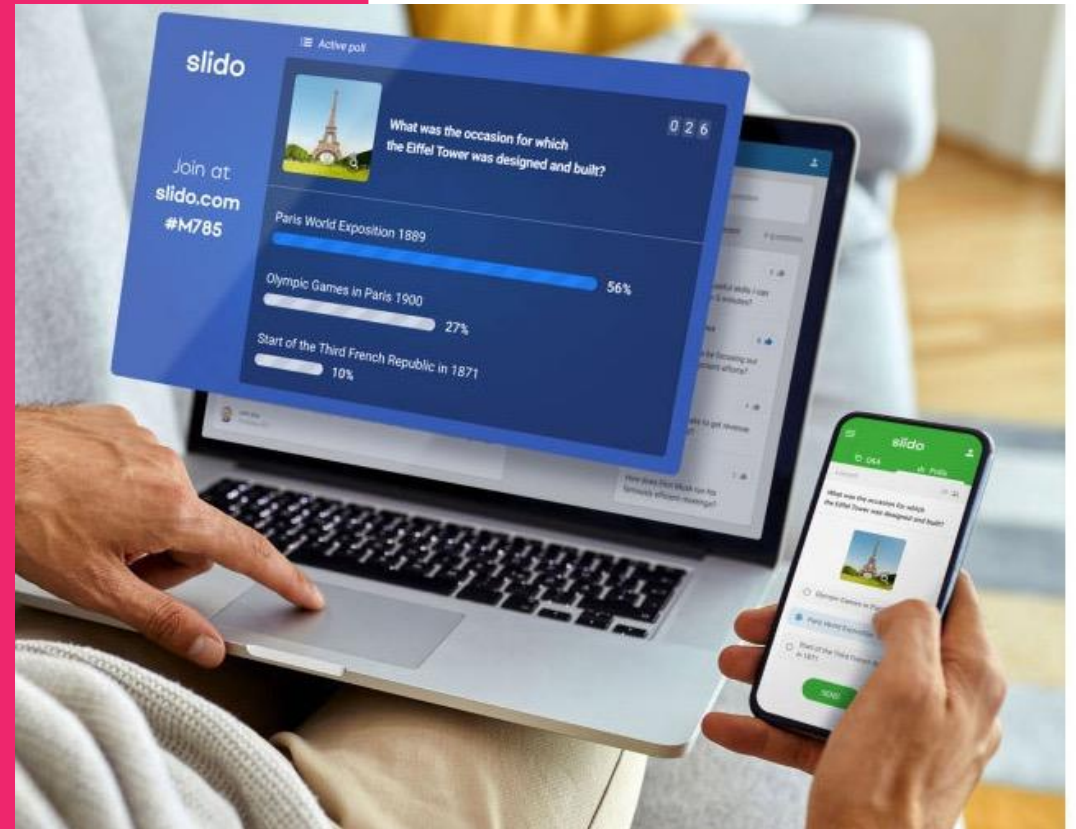
**Draw where on your  
allotment/community garden**

# LIVE POLL

---

Head to [Slido.com](https://www.slido.com)

slido



# LIVE SLIDO POLL 1: LNRS ENGAGEMENT SURVEY

---

Slido.com

Enter meeting code 4442662

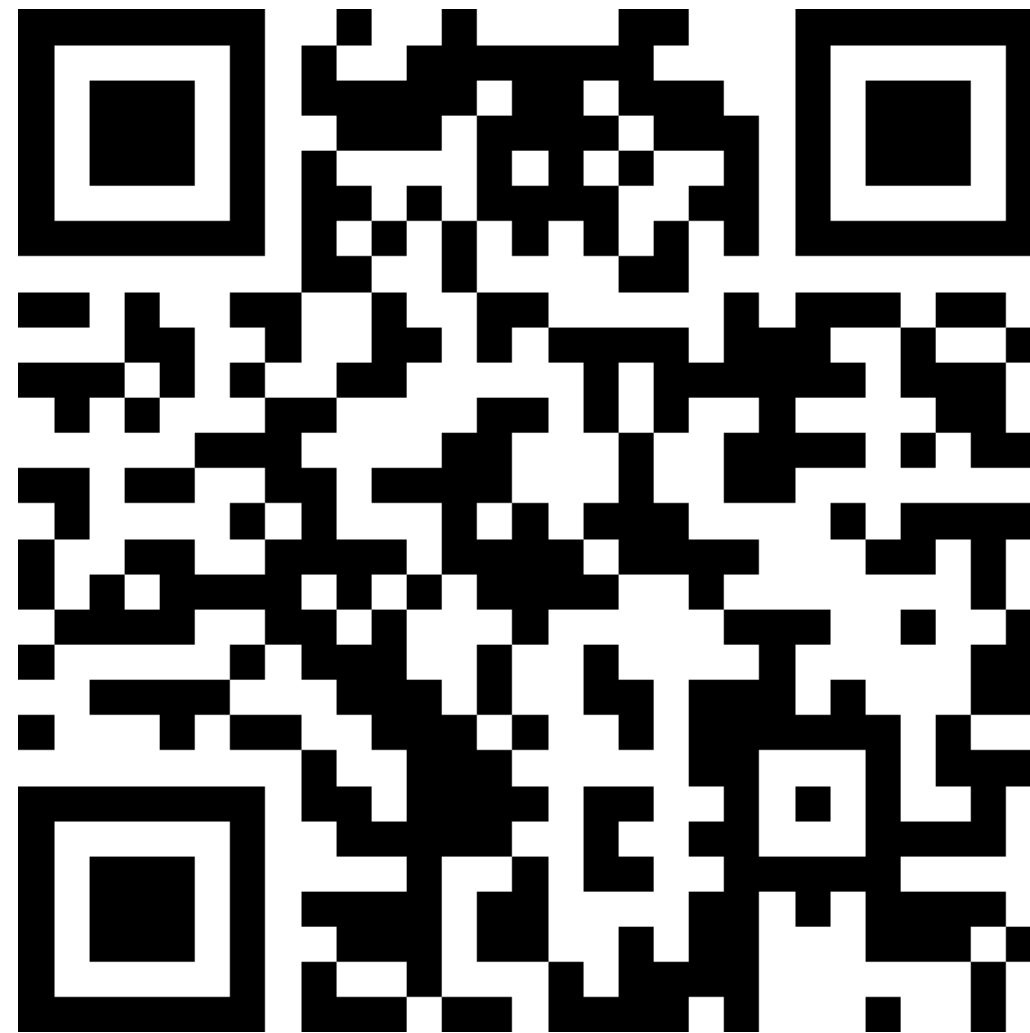


## LIVE SLIDO POLL 2: LIST OF NATURE RECOVERY MEASURES PROVIDED TO RANK.

---

Slido.com

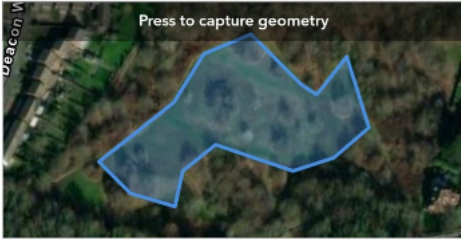
Enter meeting code 2821941





# DEMO INTERACTIVE MAP

Please note all areas (polygons) submitted, will be automatically added to the live LNRS interactive map.



Perimeter: 426.96 Meters  
Area: 7,066.17 Sq meters

**Figure Legend**

**Designated Sites**

SINC	SSSI	SSSI, SAC, NNR
LNR	SSSI, NNR	SSSI, Ramsar, SPA
NNR	SSSI, SAC	Ramsar, SPA

*The map contains Statutory Site data © Natural England and SINC data © GiGL CC BY-NC. The GiGL data presented are for public information only, not for commercial use. Please contact GiGL, if you need data or information for any other purpose.*

**What type of habitat does your suggested opportunity relate to?\***

An opportunity refers to an area where nature should be improved

Acid grassland

**Is your suggested opportunity for:\***

☐ More (habitat creation)

☐ Bigger (habitat expansion)

☒ Better (improvement of existing habitat)

☐ Joined up (connecting existing habitats)

☐ Other (please state)

**Does your opportunity relate to a particular species?\***

Invertebrates

**Please specify:**

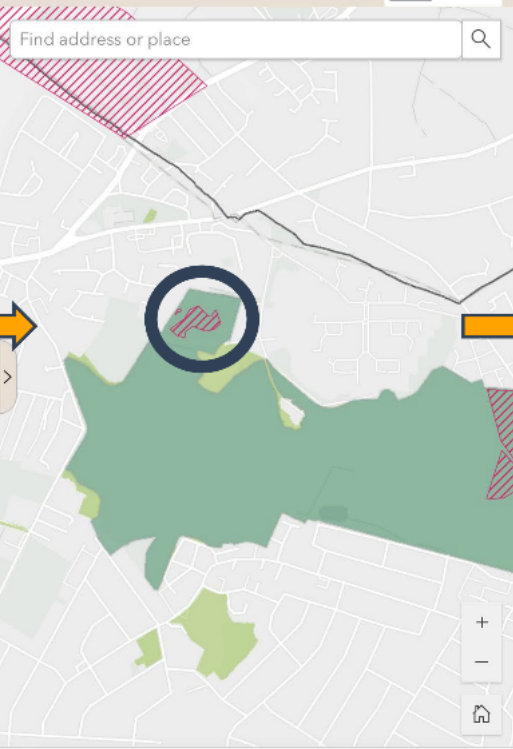
Wild Bees (Bumblebees and Solitary Bees)

Add your suggestions for the LNRS \*

**Opportunities and Constraints for Nature Recovery in London**

Map created by Greenspace Information for Greater London CIC (GiGL) using data submitted by a range of London stakeholders

Find address or place

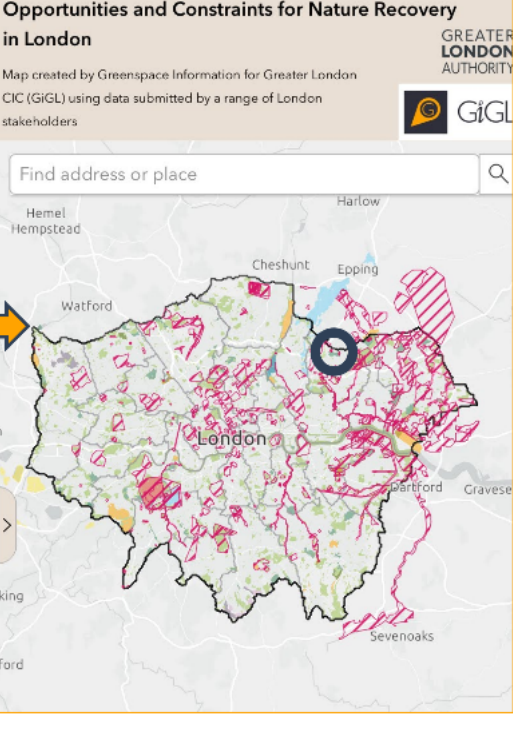


AA experience.arcgis.com

**Opportunities and Constraints for Nature Recovery in London**

Map created by Greenspace Information for Greater London CIC (GiGL) using data submitted by a range of London stakeholders

Find address or place



# YOUR TURN TO USE THE MAP

---



# YOUR TURN TO USE THE MAP

Are you responding as part of one of the following in-person workshops?:\*

☐ LNRS species workshop (24th September)

☐ Lunch and Learn: London Nature Recovery Interactive Map Tutorial (1st October)

☐ London Nature Recovery Interactive Map Tutorial (2nd October)

☒ SEWN Together - a localised food growing gathering in North London (3rd October)

☐ None of the above

Add your suggestions for the LNRS.\*

Please select the button in the top right-hand corner of the map below to draw the specific area associated with the habitat (and species) you would like considered in the LNRS. The Greater London boundary is shown in a dark line - this is the area included in the London LNRS. Feel free to add suggestions that cross the border between London and other areas, but we will not be able to consider suggestions that fall wholly outside the Greater London boundary. The coloured areas show areas that are already protected for nature (specific designations are set out in the legend below). You can upload any additional shapefiles containing exact boundaries at the end of this form.

Please note all areas (polygons) submitted, will be automatically added to the live LNRS interactive map.

# MAYOR OF LONDON

---

**Q&A**

**MAYOR OF LONDON**

---

# **How to get in touch**

**Biodiversity@london.gov.uk**

**[www.london.gov.uk](http://www.london.gov.uk)**