

# Fringe Farming: Agroecology on the urban fringes

Aryo Feldman - [aryo@sustainweb.org](mailto:aryo@sustainweb.org)

Glasgow Fringe Farming event – WashHouse, Glasgow  
(Credit: Rob Logan)



# Agroecological food systems

- Shorter supply chains
- Decentralised
- Diversification

**Local food** – connect food producers and consumers in the same geographic region, to develop more self-reliant and resilient food networks

---

# Agroecological food systems

- Shorter supply chains
- Decentralised
- Diversification
- Horizontal decision-making
- Farmer empowerment

**Local food** – connect food producers and consumers in the same geographic region, to develop more self-reliant and resilient food networks

---

**Food sovereignty** – a food system in which all actors involved control the mechanisms and policies of food production & distribution

---

Number of annual premature deaths attributed to low vegetable diets in the UK: 18,000\*

---

Converting 0.65% more agricultural land to horticultural production would meet national fruit and veg demand\*\*

---

\*Veg Facts 2021 - Food Foundation  
\*\*Veg Facts 2020 - Food Foundation

## The Fringe Farming project

- Build connections between urban and rural areas with multiple agroecological benefits
- Increase access to fresh fruit & veg across the UK
- Support local food infrastructure





Fringe Farming partners' gathering – Regather Farm, Sheffield  
(Credit: Rob Logan)

## What's been happening?

- **Year 1** – local meetings to form action plans
- **Year 2** – engaging with local action plans
- **Year 3?** – forging political alliances, lobbying action, devolved nations

## Context - critical issues

- Public health
- Climate emergency
- Cost of living crisis

Proportion of farm-holders  
younger than 35 years old:  
3%\*

---

## Context - critical issues

- Public health
- Climate emergency
- Cost of living crisis
- Lack of diversity in farming
- Land competition

\*Agriculture in the UK, 2017

# Lobbying local & national policies

- Maintain and expand land access by local authorities and other public institutions



# Lobbying local & national policies

- Maintain and expand land access by local authorities and other public institutions
- Delivering an integrated package
  - Land
  - Resources
  - Skills training
  - Market

# Policy recommendations

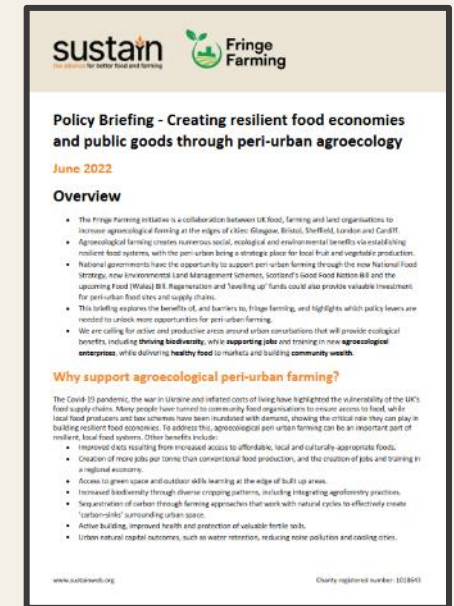
Our national & local policy recommendations in full

[www.sustainweb.org/publications/feb22-fringe-farming/](http://www.sustainweb.org/publications/feb22-fringe-farming/)

Policy briefing

[www.sustainweb.org/assets/policy\\_briefing\\_fringe-farming-Jun22.pdf](http://www.sustainweb.org/assets/policy_briefing_fringe-farming-Jun22.pdf)

[www.sustainweb.org/fringe-farming/](http://www.sustainweb.org/fringe-farming/)



 **INCREDIBLE  
EDIBLE**

**COMMUNITY · LEARNING ·  
SUSTAINABILITY**

# SEEDS TO SOLUTIONS

PEOPLE POWERED SYSTEMS

A GROUND UP RESPONSE TO CLIMATE CHANGE



**INCREDIBLE**

**BEGINNINGS**

## **Why bother?**

- Huge weather swings
- Health problems through the roof
- Water wars on the horizon
- Increasingly divided societies

**Where's the leadership?**



# SPINNING

# THREE PLATES



Local food growing in our neighbourhoods

Sharing the lost arts of growing and cooking

Making sticky money economies

Community

Learning

Business

150 group's  
across the UK

Australia, France  
& Argentina



**CHANGING**

**SPACES**

**DOING**

**BUSINESS**

**CONNECTING**

**PEOPLE**



**BE THE CHANGE**

**MAKE THE CHANGE**



**Incredible  
grass roots  
innovators  
& change  
makers**

# **A KINDER PROSPERITY**



**IF YOU EAT**

**YOU'RE IN**

**Influence Anchor  
Institutions:  
Local Government,  
NHS & Academia,  
Housing...**





- 1. Public realm needs to change**
- 2. Community owned land**
- 3. More edible towns and cities**

**LAND**







**MAKE YOUR  
LANDSCAPE  
EDIBLE**



**Incredible Edible's vision for a  
healthier, greener future.**



**ADAPT**

**FOR HOPE**

**Never doubt that a small group of thoughtful, committed, citizens can change the world.**

**Indeed, it is the only thing that ever has.**

MARGARET MEAD

**THANK YOU**



Wolves Lane Proposal,  
view towards Building A - The Hall

# Fringe Farming in London

[shared assets]



# Fringe Farming London action plan

## Access to / protection of land

- **Develop business case for local authorities / landowners**
- Undertake demand for land survey
- Develop a campaign for productive use of the greenbelt

## Policy change and implementation

- **Meet with individual LAs re food / land policies**
- Get better data on land availability
- Identify / campaign for new funding

## Training and skills

- **Develop evidence base**
- **Map out & join up routes / pathways**
- Identify key blockages eg starter farms

# Challenge LDN Fringe Farming project

[shared assets]



sustain

Cohere

organicLea



Creating

a compelling, comprehensive **business case**

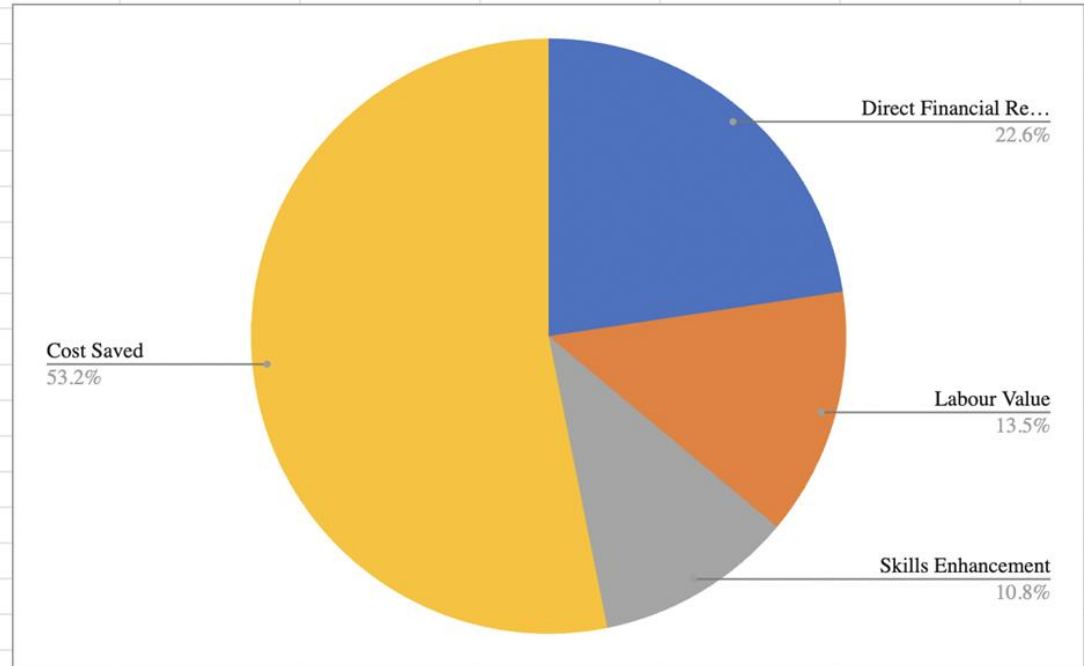
and **commercial service offer**

for local authorities & other institutional  
landowners



# Sutton Community Farm: Annual Value Generated

<b>Direct Financial Revenue</b>	<b>£624,283</b>
<b>Labour Value</b>	<b>£371,822</b>
<b>Skills Enhancement</b>	<b>£297,200</b>
<b>Cost Saved</b>	<b>£1,468,145</b>
<b>Total</b>	<b>£2,761,450</b>



# Developing a service

## Preparing the ground

Gathering information, ensuring alignment with policy objectives, building support, developing understanding, and testing feasibility

## Getting on site

Developing a land offer, business plan development, ensuring appropriate legal structures, tenure and planning are in place

## Sustainability and scaling

Market and business development, training and securing capital investment

# New Entrant Support Scheme

A new training programme to provide incubator support to new entrants into agroecological farming in the South East of England.

**Start up programme** for those starting a new business

**Scale up programme** for those developing an existing business

January to April 2023





[shared assets]

**Thank you!**

[mark@sharedassets.org.uk](mailto:mark@sharedassets.org.uk)

[hello@sharedassets.org.uk](mailto:hello@sharedassets.org.uk) | [www.sharedassets.org.uk](http://www.sharedassets.org.uk)